

THE IMPORTANCE OF WATER IN THE CULTURAL LANDSCAPE. THE SPRINGS OF THE SOLLER VALLEY - MALLORCA



UNESCO English Français [Info: practical visit info](#) Login Join the 115,334 Members

News & Events The List About World Heritage Activities Publications Partnerships Resources Search

UNESCO Culture World Heritage Centre About World Heritage The Convention Operational Guidelines

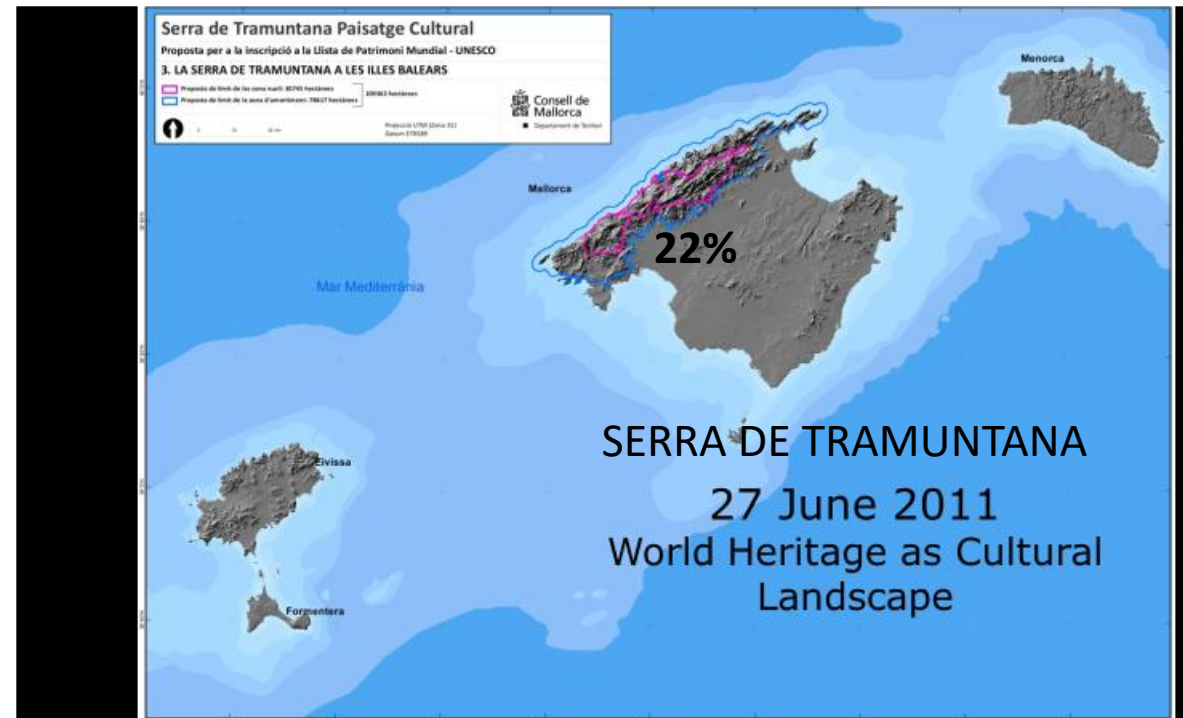
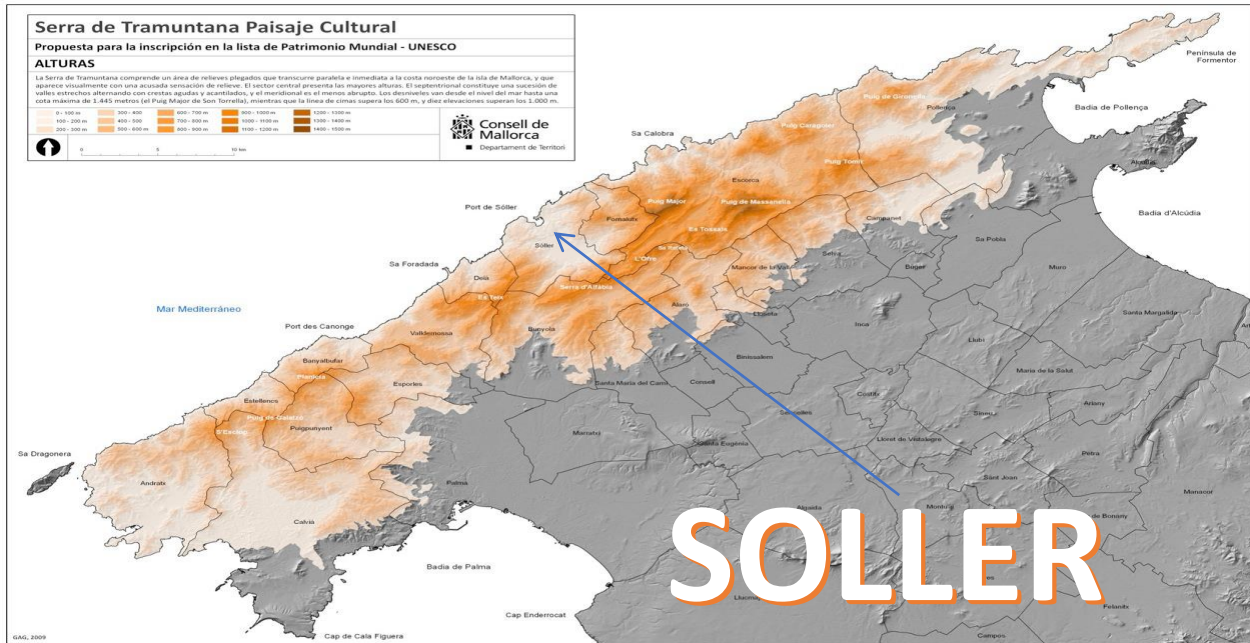
The Operational Guidelines for the Implementation of the World Heritage Convention

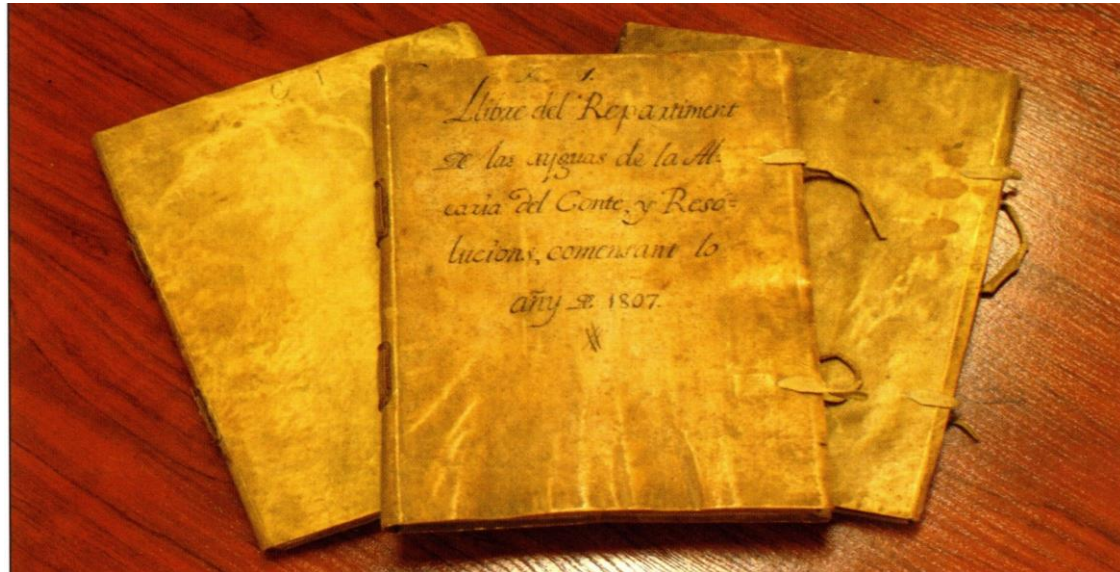
The World Heritage Committee, the main body in charge of the implementation of the Convention, has developed precise criteria for the inscription of properties on the World Heritage List and for the provision of international assistance under the World Heritage Fund. These are all included in a document entitled "Operational Guidelines for the Implementation of the World Heritage Convention". This document has been revised by the Committee to reflect new concepts, knowledge or experiences.

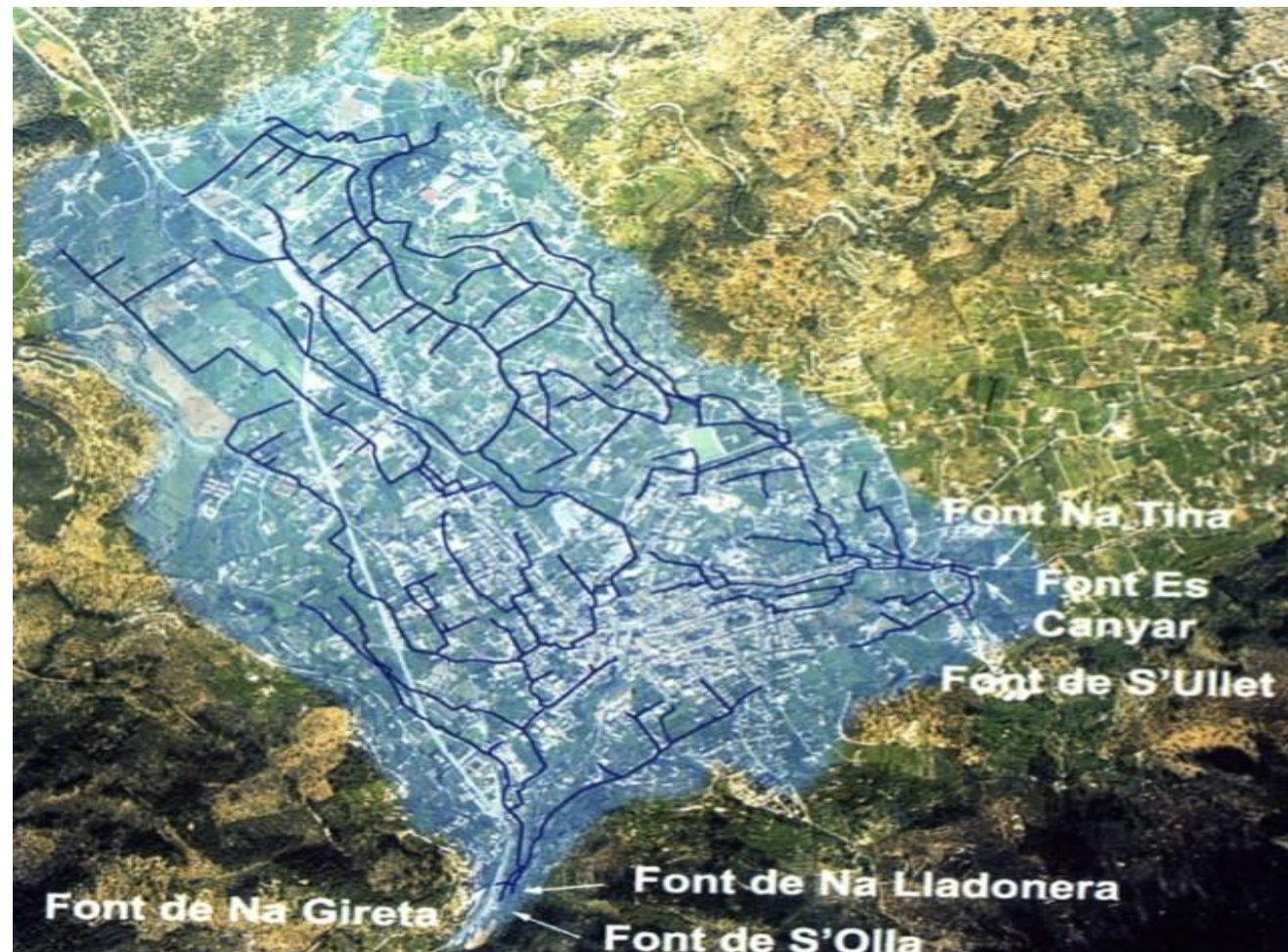
- Convention Text
- Operational Guidelines**
- The Committee
 - Committee Decisions
- The General Assembly
 - Statutory Meetings
- The States Parties
- The Centre
 - Employment & Internships
 - Who's Who
- The Advisory Bodies
- Funding
 - World Heritage Fund
 - Financial regulations
 - International Assistance

World Heritage papers **26**

World Heritage Cultural Landscapes
A Handbook for Conservation and Management







Oli de Sa Serra
Patrimoni Mundial



Taronja de Sa Serra
Patrimoni Mundial



Ví de Sa Serra
Patrimoni Mundial

